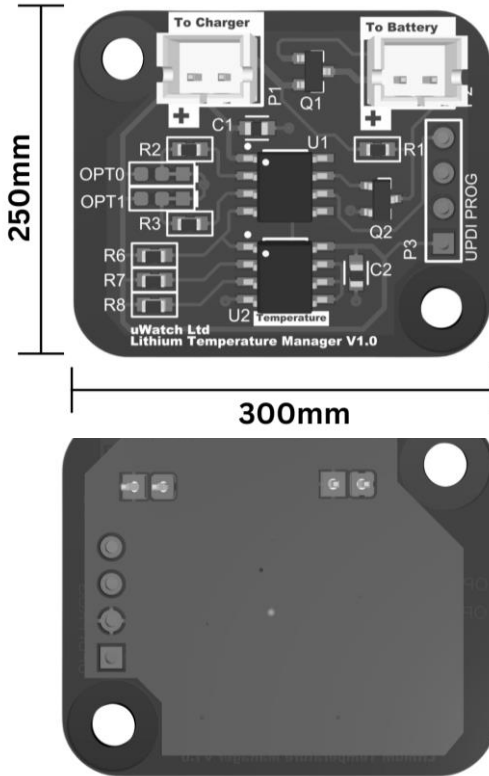


PRODUCT DATASHEET

Lithium Battery Temperature Manager V1.0



- Prevents solar panel from charging battery below 1C.
- Prevents damage to lithium battery.
- Periodic checks reduce battery consumption.
- Installed between rechargeable battery, and solar controller.

<u>Name</u>	<u>Description</u>
SKU	LTM001
Charge cut-off temperature	2C, +/-1C 35.6F, +/- 33.8F
Checking period	2 hours
Operating Temperature	-10C to +40C
Maximum Solar Charge Voltage	12v
Maximum Power Input	10 Watts
Compatible Battery Nominal Voltage	1.5v – 7v
Connections	2x JST-PH 2-Way Through Hole PCB Header, 2.0mm Pitch
Dimensions	25mm x 30mm x 10mm
Fixings	2x 3mm DIA screw holes